

InLine Pipe

Pipe with 3A approved DN38 hygienic instrument connections

"On the spot" temperature and pressure measurements

No "dead areas" in the pipe

Complies with the directives and standards from 3A, FDA, EHEDG and EN 1672-2

Reduces welding and finishing difficulties.

Designed for FlexBar HRT pressure transmitter and CombiTemp temperature transmitter



Description

InLine is a system of hygienic pipes with one or two integrated unions for 3A/DN38 connections ready for welding into the process piping, featuring a great finish.

The pipes fit the 3A/DN38 versions of the FlexBar HRT flush diaphragm pressure transmitter and the CombiTemp Pt100 sensor.

The products in stainless steel comply with the strict demands from the relevant institutes in the food industry, EHEDG, FDA and 3A.

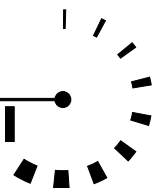
Certificates for the InLine system can be supplied for the materials, O-rings and surface roughness.

The InLine pipe with 2 unions is the perfect choice for users with a demand for precise "spot" measuring of both temperature and pressure without having "dead areas" as in conventional tees.

The system is easy to weld into new or existing pipelines ensuring hygienic connections without the traditional, costly finish of the surfaces.

**BOURDON
HAENNI**

made to measure



Technical Data

Mechanical data

Material	Acid-proof stainless steel, AISI 316 L/W.1.4404
Inner surface	$R_a < 0.4 \mu\text{m}$ (electropolished)
Outer surface	Glass-bead blast
Approval	3A - 930
Vibrations	Lloyds Register, test 2

Design

Manufactured according to the guidelines, standards and demands from 3A, FDA, EHEDG, EN1672-2.

Disposal of product and packing

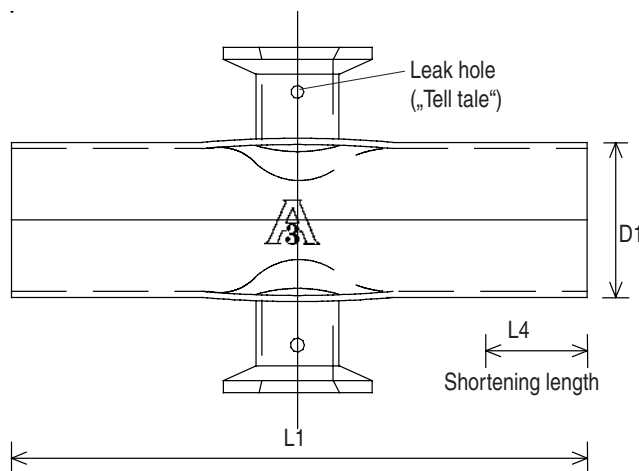
According to national laws or by returning to Bourdon-Haenni

Ordering Details - InLine Pipe

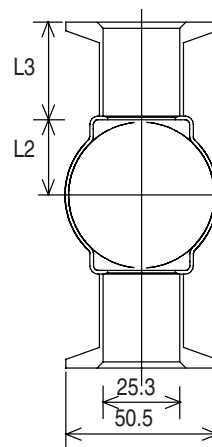
Size (ISO 2037)	Type	Pressure	Length	Wall thickness	81 26 - 9xx
DN38	Single union	PN40	140	1.2	34
DN38	Dual union	PN40	140	1.2	35
DN51	Single union	PN30	190	1.2	36
DN51	Dual union	PN30	190	1.2	37
DN63.5	Single union	PN30	190	1.6	48
DN63.5	Dual union	PN30	190	1.6	49
DN76.1	Single union	PN25	190	1.6	44
DN76.1	Dual union	PN25	190	1.6	45
DN101.6	Single union	PN20	190	2.0	46
DN101.6	Dual union	PN20	190	2.0	47

Dimensional Drawings

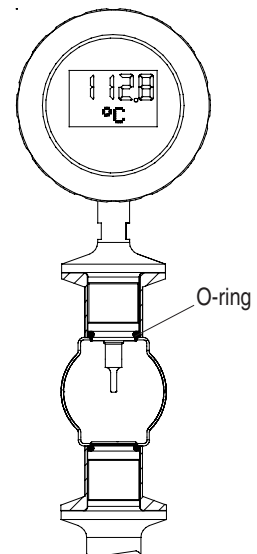
[mm] The InLine pipe is available with one or two instrument unions 3A/DN38.



InLine pipe, dual union, side view



Dual union, end view



Hygienic „Spot“ measuring

Dimensions

Dim.	DN38	DN51	DN63	DN76	DN101
L1	140	190	190	190	190
L2	19.8	25.9	32	39	52
L3	32.5	32.5	32.5	32	32
L4	20	45	45	45	45
D1	38	51	63.5	76.1	101.6

For further accessories please refer to the data sheet „FlexBar HRT Accessories“

Accessories

O-ring	Size	Approval	Type no.
NBR (5 pcs.)	DN38	FDA	81 26-971
EPDM (5 pcs.)	DN38	FDA and 3A	81 26-972
FPM/Viton® (5 pcs.)	DN38	FDA and 3A	81 26-973

Certificates	Type no.
Surface roughness	0923 1111
Material 3.1.b	81 26-999

UK/2004-10-02 This data sheet may only be reproduced in full.