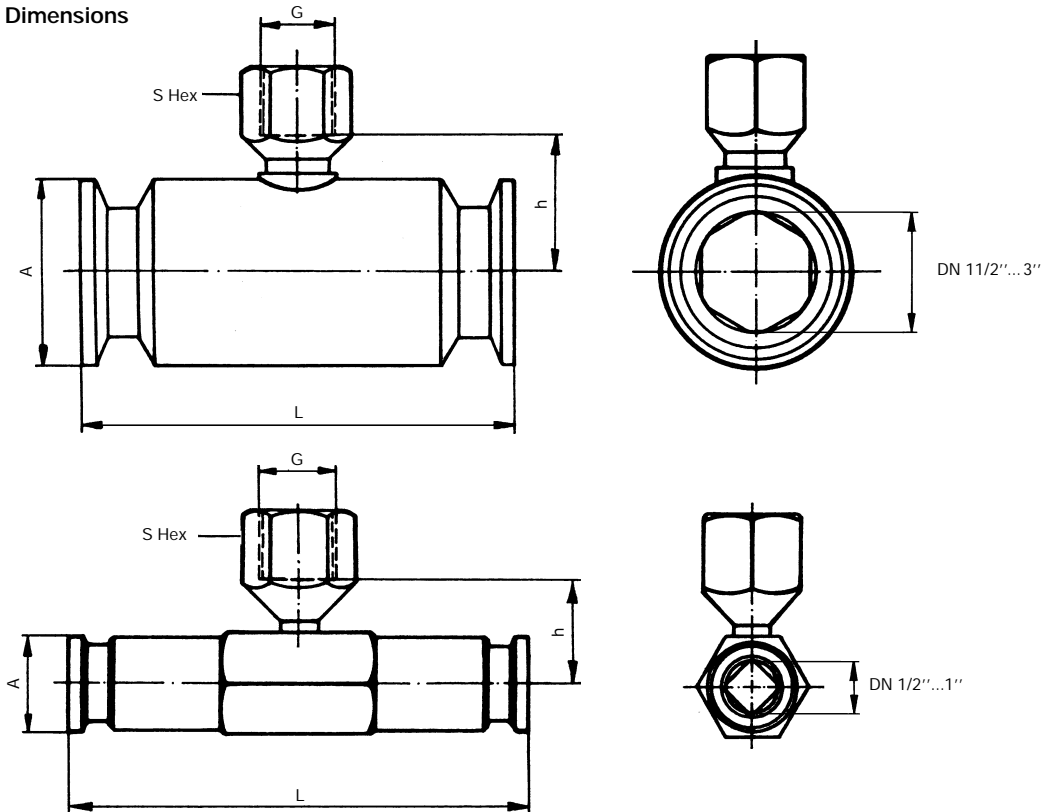


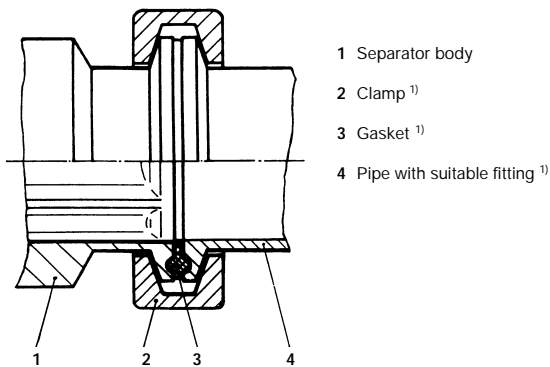
Pipe Separator Series 1620

Clamp-connection ISO 2852

Dimensions



Connection example



Dimension chart

DN	A [mm]	L [mm]	h [mm]	G	S [mm]	Weight [kg]	Inner shape
1/2''	25	140	27	G 1/2	27	0,5	4-sided
3/4''	25	120	24	G 1/4	17	0,5	4-sided
3/4''	25	120	27	G 1/2	27	0,5	4-sided
1''	50,5	120	36	G 1/2	27	1,6	4-sided
1 1/2''	50,5	120	36	G 1/2	27	1,2	6-sided
2''	64	100	45	G 1/2	27	1,3	6-sided
2 1/2''	77,5	100	52	G 1/2	27	1,6	8-sided
3''	91	100	58	G 1/2	27	2,0	8-sided

Pressure ranges (directive values)

Mounting to pressure gauge or pressure transmitter		NS 63	NS 80	NS 100	NS 160	ED 518
Pressure ranges [bar] with nominal size DN	1/2''	6...60	16...60	25...60 ⁴⁾	-	³⁾
	3/4''	1,6...60	1,6...60	2,5...60	-	
	3/4''	1,6...60	1,6...60	2,5...60	-	
	1''	1,6...60	1,6...40	1,6...40	2,5...40	
	1 1/2''	1,6...60	1,6...40	1,6...40	2,5...40	
	2''	1,6...60	1,6...40	1,6...40	1,6...40	
	2 1/2''	1,6...60 ²⁾	1,6...40	1,6...40	1,6...40	
	3''	1,6...60 ²⁾	1,6...40	1,6...40	1,6...40	

¹⁾ Not included in delivery.

²⁾ Only possible with transition piece G 1/4 inside / G 1/2 outside.

³⁾ On request: Electronic pressure gauges can be used for pressures ≥ 250 mbar without impairing the accuracy.

Please fill in page D1.201 so that we can properly assess your needs.

⁴⁾ Preferably use NS 63 or NS 80 resp. ED 518.