

## Flow Switch

Series 3000E Data Sheet

### Applications

Flow failure protection  
Chemical injection systems  
Water treatment  
Food industry  
Heating & ventilation  
Machine tools  
Plant & equipment protection  
Cooling water monitoring  
Centrifugal, peristaltic and dosing pump monitoring

### Design Features

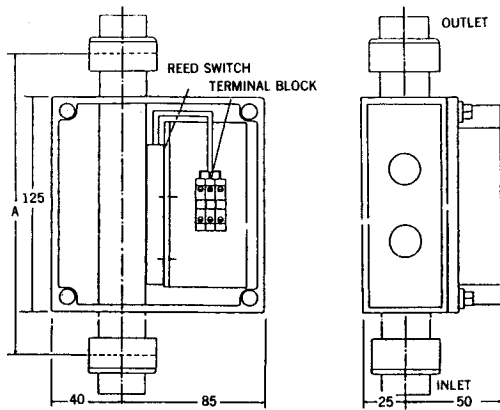
Simple to install  
Very low flow capability  
Large turndown ratio  
Designed for pulsed or steady flow  
Very low pressure drop  
Wide corrosion resistance with a number of contact material options  
Site adjustable  
Suitable for liquids or gases  
Sealed electrical terminal connection  
Simple reed switch requires no additional power supply  
No glands or seals to leak  
Process connections 3/8", 1/2", 3/4" 1" 1 1/2" & 2" BSP F/NPT F, socket unions, or flanges

### TECHNICAL DATA

Flow ranges 0.05-10000 l/hr  
Max working pressure plastic versions 12 bar g stainless steel versions 320 bar g  
Weatherproof protection IP67  
Install vertically with flow upwards  
BSP or NPT female thread connections up to 2"  
PVC or ABS socket union connections up to 2"  
Single pole change over reed switch  
Standard switch rating 130V 0.25A 3VA max load  
High load switch rating 250V 1.5A 20VA max  
Suitable for dc control circuits  
See price list for available materials

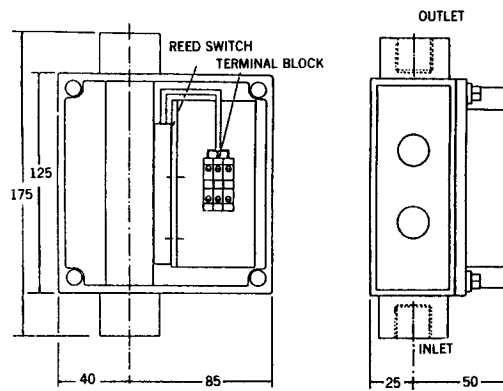


**SERIES 3000E:  
WITH SOCKET UNION  
PROCESS CONNECTIONS**  
*Available in ABS or PVC Contact Materials*



**SERIES 3000E:  
PLASTIC AND  
STAINLESS STEEL VERSIONS**

*Female Threads*



**SOCKET UNION SIZE      DIMENSION A**

**IMPERIAL**

3/8"	155
1/2"	176
3/4"	181
1"	192
1 1/4"	203
1 1/2"	203
2	240

**METRIC**

16	173
20	179
25	185
32	191
40	205
50	217

**SERIES 3000E:  
FLANGED VERSION IN PLASTICS  
OR STAINLESS STEEL**

