

## Flow Switch

### Applications

Flow failure protection  
Chemical injection systems  
Water treatment  
Food industry  
Heating & ventilation  
Machine tools  
Plant & equipment protection  
Cooling water monitoring  
Centrifugal, peristaltic and dosing pump monitoring

### Design Features

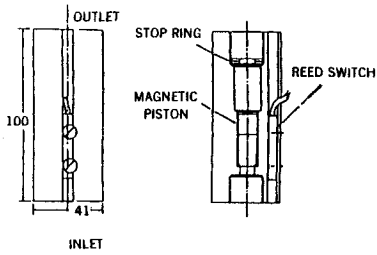
Economically priced  
Simple to install  
Very low flow capability  
Large turndown ratio  
Designed for pulsed or steady flow  
Very low pressure drop  
Wide corrosion resistance with a number of contact material options  
Site adjustable  
Suitable for liquids or gases  
Flying lead electrical connection  
Simple reed switch requires no additional power supply  
No glands or seals to leak  
Process connections 3/8", 1/2", 3/4" 1" BSP F/NPT F threads or socket unions

### TECHNICAL DATA

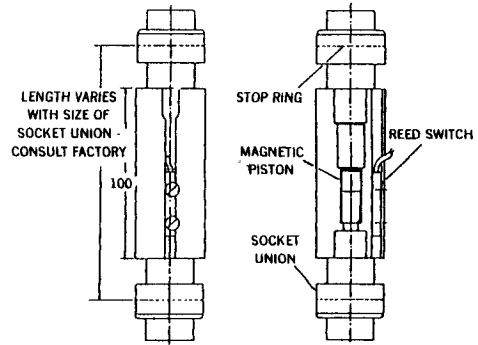
Flow ranges 0.05-1000 l/hr  
Max working pressure plastic versions 12 bar g stainless steel versions 320 bar g  
Install vertically with flow upwards  
BSP or NPT female thread connections up to 1"  
PVC or ABS socket union connections up to 1"  
Single pole change over reed switch  
Standard switch rating 130V 0.25A 3VA max load  
Suitable for dc control circuits  
See price list for available materials



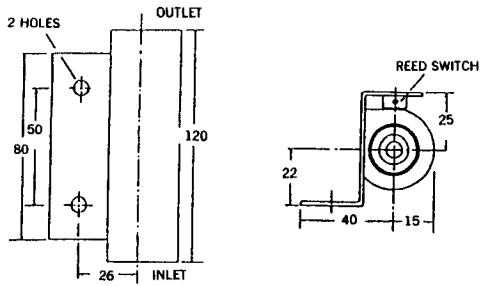
**SERIES 3000:**  
**PLASTICS VERSION**  
*Female Threads up to 3/4"*



**SERIES 3000:**  
**WITH SOCKET UNION**  
**PROCESS CONNECTIONS**



**SERIES 3000**  
**STAINLESS STEEL VERSION**  
*Supplied with 'J' Reed Switch*  
*Female Threads up to 3/4"*



**SERIES 3000:**  
**STAINLESS STEEL VERSION**  
*Supplied with 'G' or 'H' Reed Switch*  
*Female Threads up to 3/4"*

